



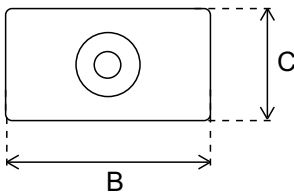
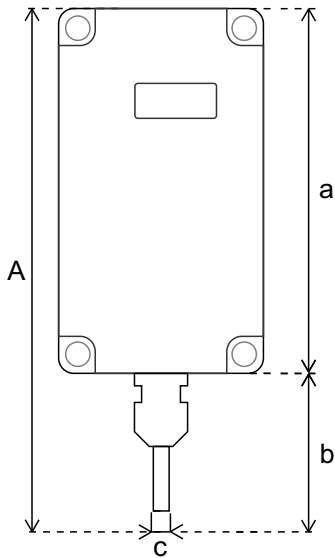
TS-412 / 413 // PORTABLE TEMPERATURE SENSOR

- Accurate and Precise Measuring
- Internal Battery
- Long Operating Life
- Easy Assembling
- IP 67 Plastic Case



* Sensor cable length can be changed (0-10 m) according to demand.
Metal probe length can be selected as 50 mm or 100 mm.

TECHNICAL SPECIFICATIONS



Product Informations	
Product Name	TS-412 / 413 Portable Temperature Sensor
Input	12-24 V DC

Product Code	Sensor Type	M. Range	Sensitivity	Accuracy
TS-412	NTC-10K	-20...+60 °C	± 0,1 °C	± 0,5 °C
TS-413	1m Kablolu PT-1000	-40...+150 °C	± 0,1 °C	± 0,1 °C

Dimensions					
A	B	C	a	b	c
187 mm	65 mm	40 mm	115 mm	50 mm	6 mm