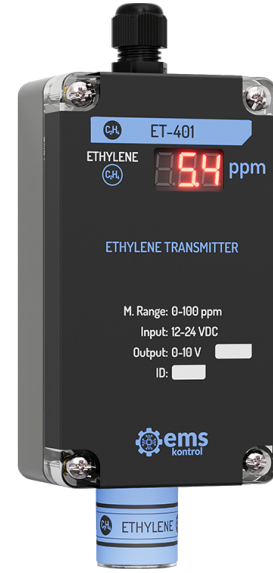


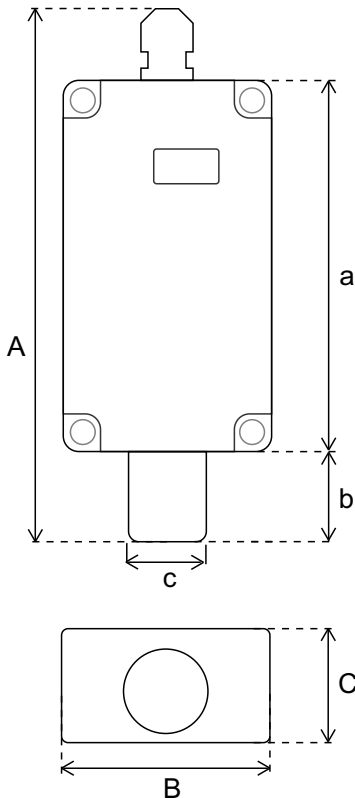


## ET-4XX // ETHYLENE (C<sub>2</sub>H<sub>4</sub>) TRANSMITTER WITH DISPLAY

- Accurate and Precise Measuring
- Analog Output
- Durable and Handy Design
- 2 Years Sensor Operating Life
- Easy Replaceable Sensor
- Easy Assembling
- IP 67 Plastic Case (Not Including Sensor)



### TECHNICAL SPECIFICATIONS



Product Informations	
Product Name	ET-4XX Ethylene (C <sub>2</sub> H <sub>4</sub> ) Transmitter with Display
Input	12-24 V DC
Output	0-10 V / 2-10 V / 0-3 V / 4-20 mA / 0-20 mA / Modbus RTU
Sensor Operating Life	2 Years

Sensor	Output Range	Sensitivity	Accuracy
Ethylene (C <sub>2</sub> H <sub>4</sub> )	0-10 ppm / 0-100 ppm	± 0,1 ppm	± 1 ppm

Product Code	Output Signal	Dimensions		
		A	B	C
ET-401	0-10 V / 2-10 V / 0-3 V	161 mm	65 mm	40 mm
ET-441	4-20 mA / 0-20 mA	a	b	c
ET-461	Modbus RTU	115 mm	24 mm	24 mm

