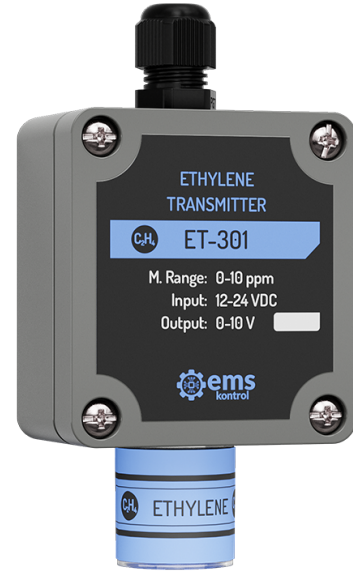


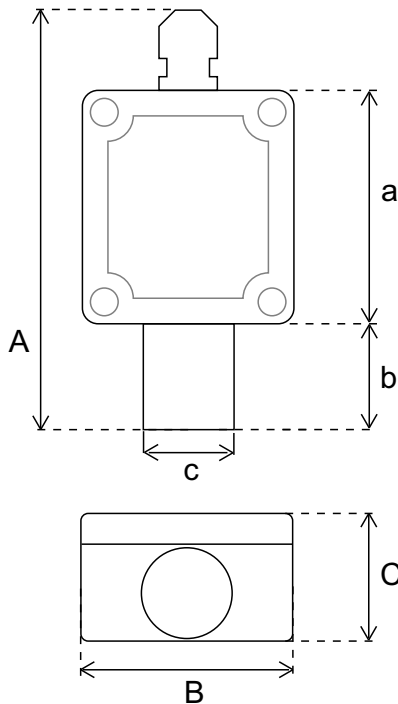


ET-3XX // ETHYLENE (C₂H₄) TRANSMITTER

- Accurate and Precise Measuring
- Analog Output
- Durable and Handy Design
- 2 Years Sensor Operating Life
- Easy Replaceable Sensor
- Easy Assembling
- IP 67 Plastic Case (Not Including Sensor)



TECHNICAL SPECIFICATIONS



Product Informations	
Product Name	ET-3XX Ethylene (C ₂ H ₄) Transmitter
Input	12-24 V DC
Output	0-10 V / 2-10 V / 0-3 V / 4-20 mA / 0-20 mA / Modbus RTU
Sensor Operating Life	2 Years

Sensor	Output Range	Sensitivity	Accuracy
Ethylene (C ₂ H ₄)	0-10 ppm / 0-100 ppm	± 0,1 ppm	± 1 ppm

Product Code	Output Signal	Dimensions		
		A	B	C
ET-301	0-10 V / 2-10 V / 0-3 V	110 mm	58 mm	35 mm
ET-341	4-20 mA / 0-20 mA	a	b	c
ET-361	Modbus RTU	64 mm	24 mm	24 mm