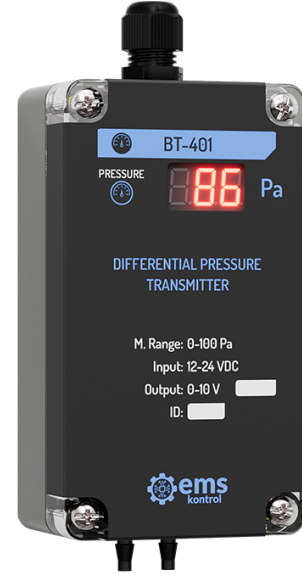


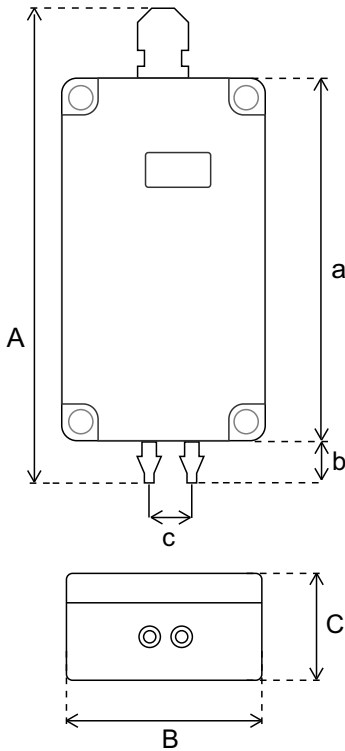


BT-4X1 / 4X2 // DIFFERENTIAL PRESSURE TRANSMITTER WITH DISPLAY

- Accurate and Precise Measuring
- Analog Output
- Durable and Handy Design
- Long Operating Life
- Easy Assembling
- IP 67 Plastic Case (Not Including Sensor)



TECHNICAL SPECIFICATIONS



Product Informations	
Product Name	BT-4X1 / 4X2 Differential Pressure Transmitter with Display
Input	12-24 V DC
Output	0-10 V / 2-10 V / 0-3 V / 4-20 mA / 0-20 mA / Modbus RTU

Product Code	Sensor	Output Range	Sensitivity	Accuracy
BT-4X1	Pressure	0-100 Pa / 0-125 Pa -125...+125 Pa	± 1 Pa	± %3
BT-4X2		0-250 Pa / 0-500 Pa -500...+500 Pa		

Product Code	Output Signal	Dimensions		
		A	B	C
BT-401 / 402	0-10 V / 2-10 V / 0-3 V	147 mm	65 mm	40 mm
BT-441 / 442	4-20 mA / 0-20 mA	a	b	c
BT-461 / 462	Modbus RTU	115 mm	10 mm	12 mm

