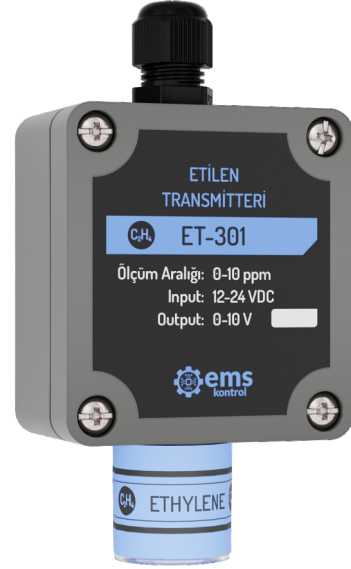


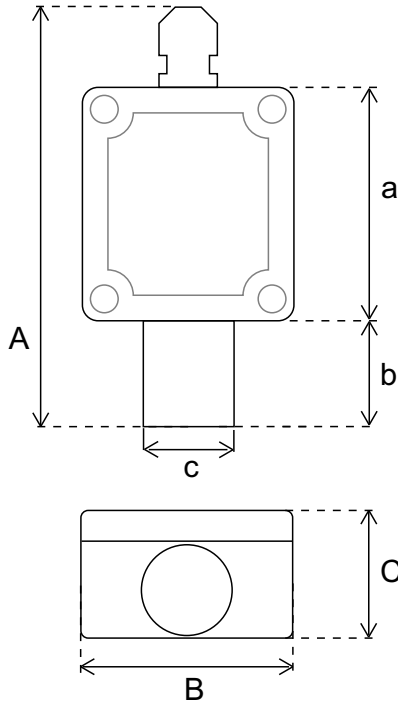


ET-3XX // ETHYLENE (C₂H₄) TRANSMITTER

- Accurate and Precise Measuring
- Analog Output
- Durable and Handy Design
- 2 Years Sensor Operating Life
- Easy Replaceable Sensor
- Easy Assembling
- IP 67 Plastic Case (Not Including Sensor)



TECHNICAL SPECIFICATIONS



Product Informations	
Product Name	ET-3XX Ethylene (C ₂ H ₄) Transmitter
Input	12-24 V DC
Output	0-10 V / 4-20 mA / Modbus RTU
Sensor Operating Life	2 Years

Sensor	Measuring Range	Sensitivity	Accuracy
Ethylene (C ₂ H ₄)	0-10 ppm / 0-100 ppm	± 0,1 ppm	± 1 ppm

Product Code	Output Signal
ET 301	0-10 V
ET 341	4-20 mA
ET 361	Modbus RTU

Dimensions		
A	B	C
110 mm	58 mm	35 mm
a	b	c
64 mm	24 mm	24 mm