

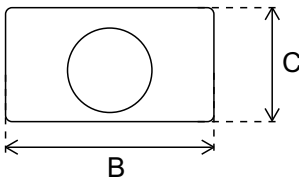
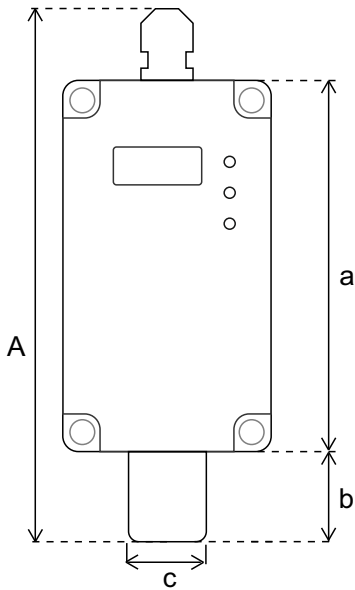


ER-411 // ETHYLENE (C₂H₄) CONTROL DEVICE

- Accurate and Precise Measuring
- 1 Relay Output
- Buzzer (Optional)
- 2 Years Sensor Operating Life
- Easy Replaceable Sensor
- Easy Assembling
- Adjustable Relay Sensitivity



TECHNICAL SPECIFICATIONS



Product Informations	
Product Name	ER-411 Ethylene (C ₂ H ₄) Control Device
Input	12-24 V DC
Output	Relay (2A)

Sensor	Measuring Range	Sensitivity	Accuracy
Ethylene (C ₂ H ₄)	0-10 ppm / 0-100 ppm	± 0,1 ppm	± 1 ppm

Dimensions					
A	B	C	a	b	c
161 mm	65 mm	40 mm	115 mm	24 mm	24 mm

